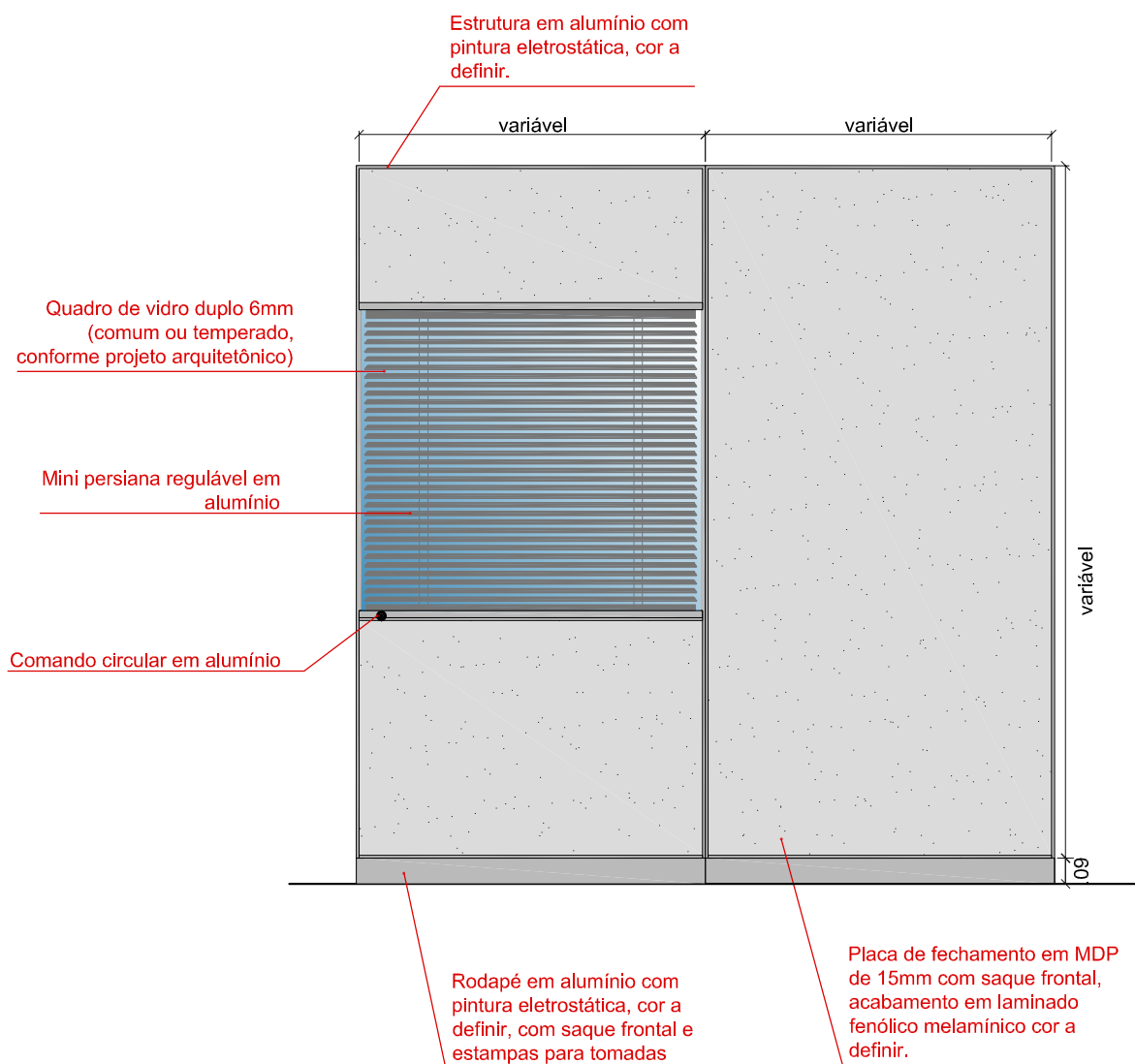


ANEXO II - DESENHOS TÉCNICOS

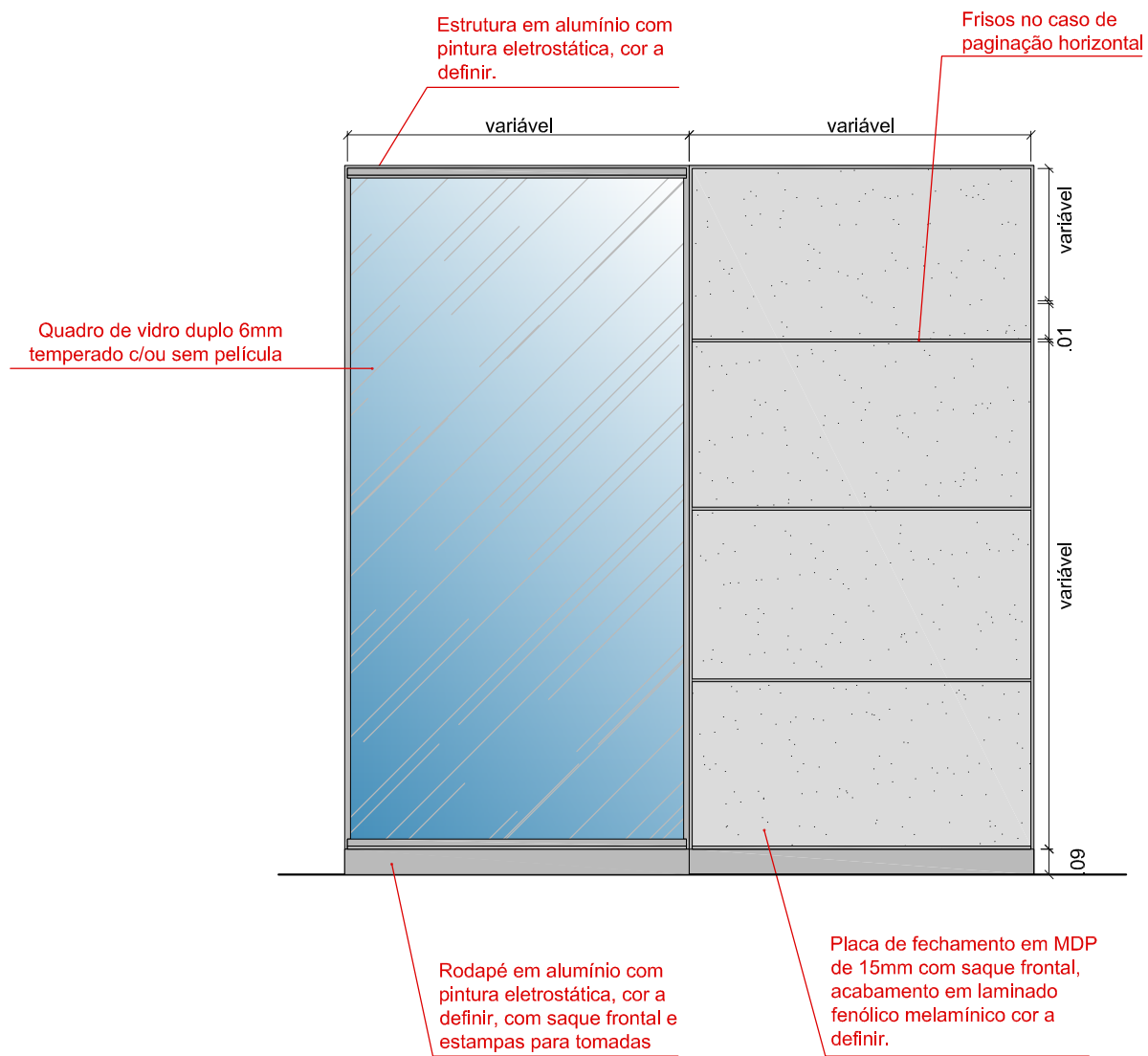
1. Divisória especial dupla de saque frontal



Divisória especial dupla

VISTA FRONTAL

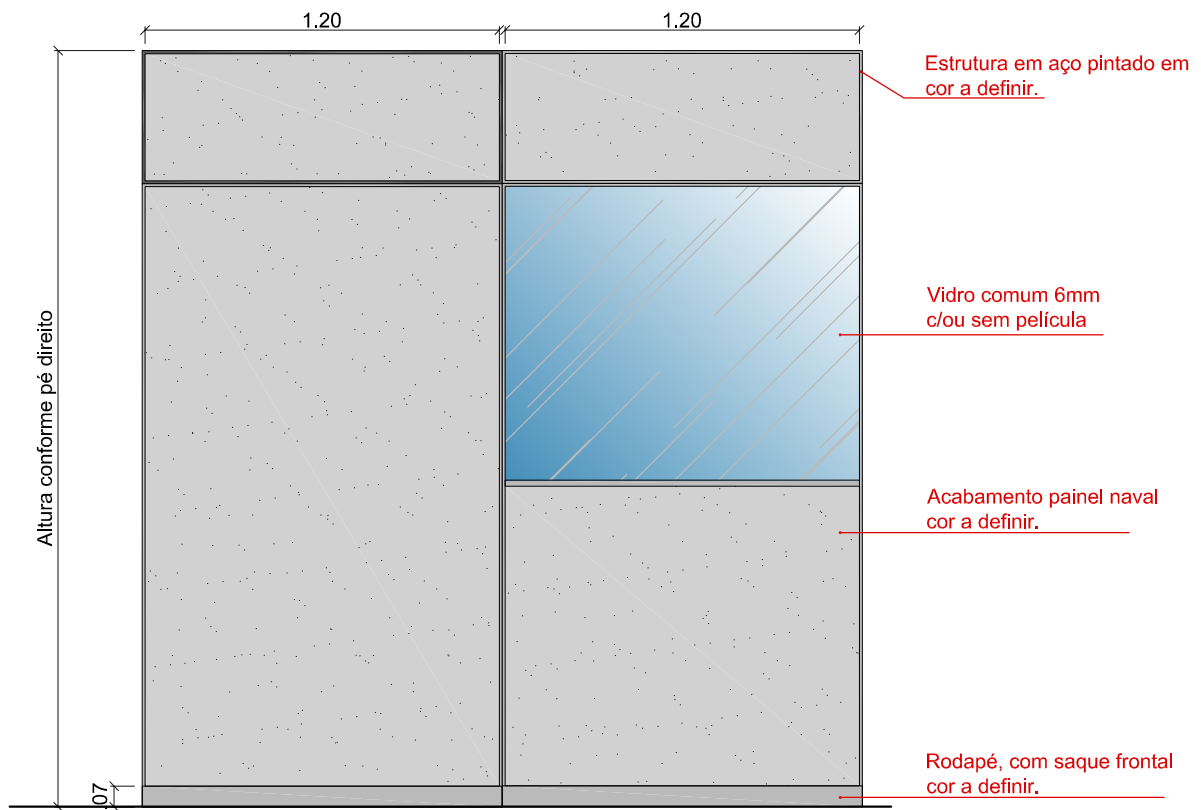
SEM ESCALA



Divisória especial dupla

VISTA FRONTAL

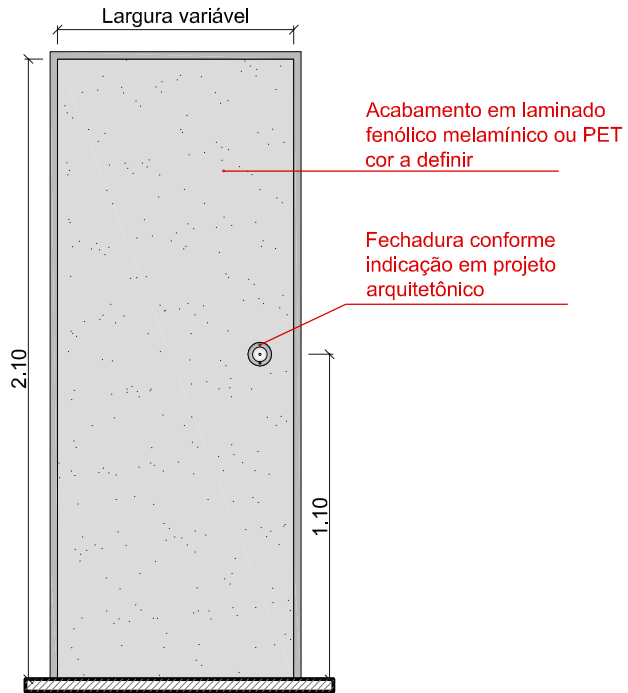
SEM ESCALA



Divisória naval

VISTA FRONTAL

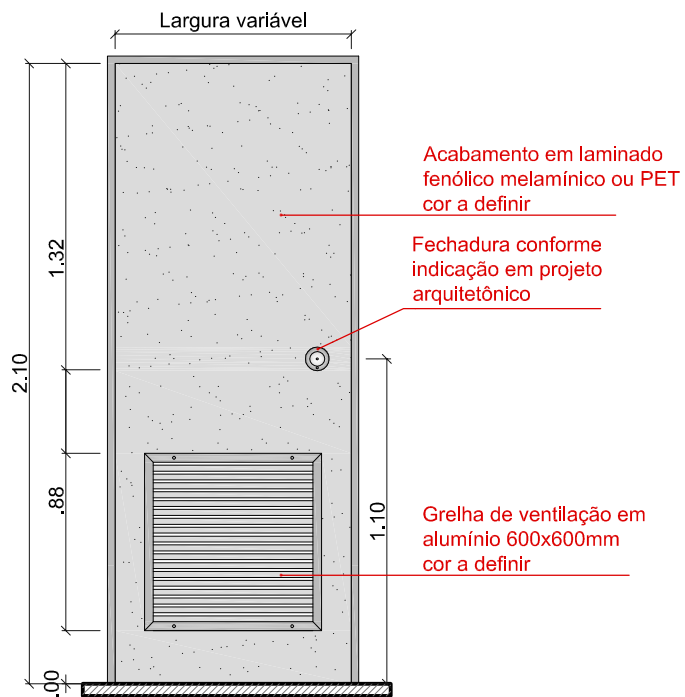
SEM ESCALA



Porta geral

VISTA FRONTAL

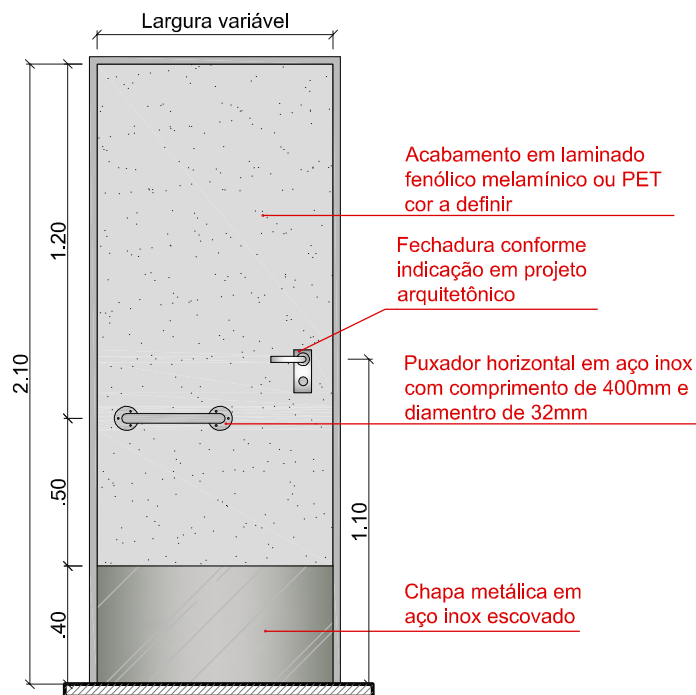
ESCALA 1:50



Porta com Grelha de Ventilação

VISTA FRONTAL

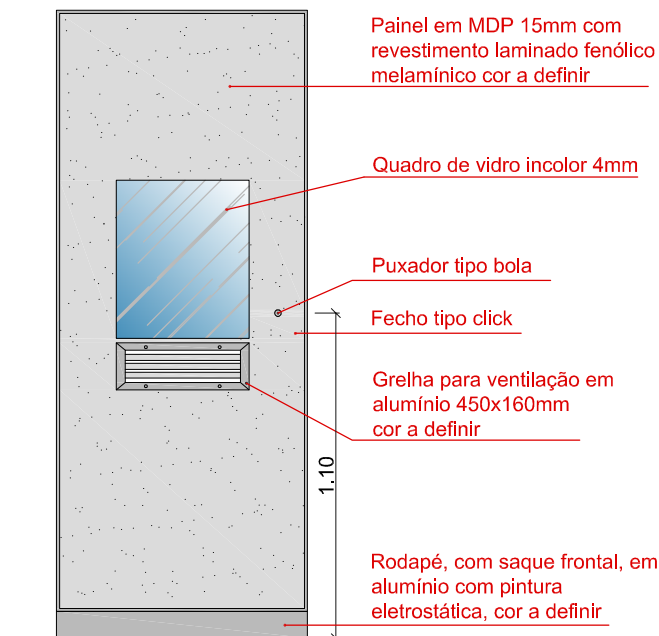
ESCALA 1:50



Porta para sanitários acessíveis

VISTA FRONTAL

ESCALA 1:50



Portinhola para abrigo de hidrantes

VISTA FRONTAL

ESCALA 1:50