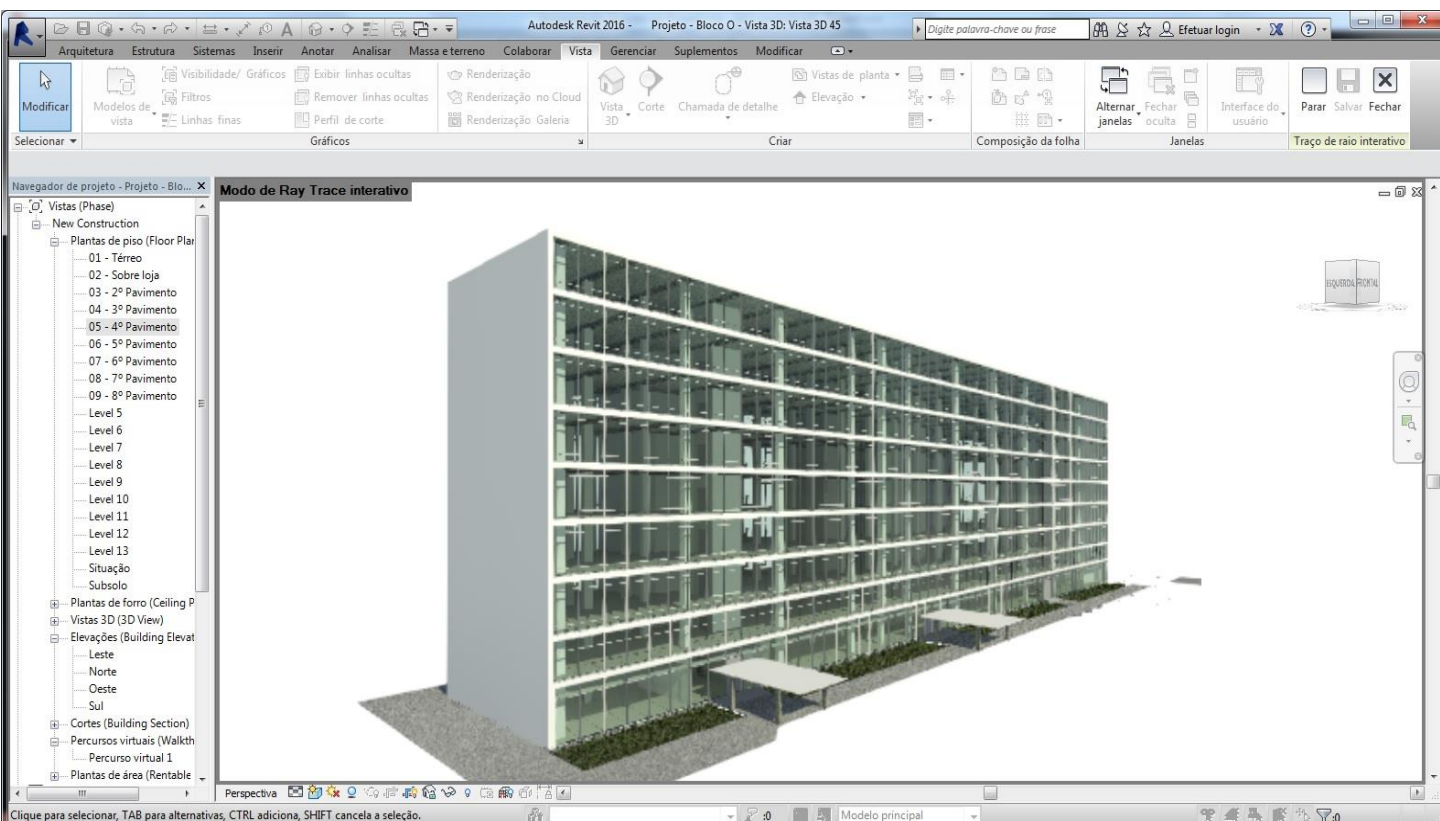
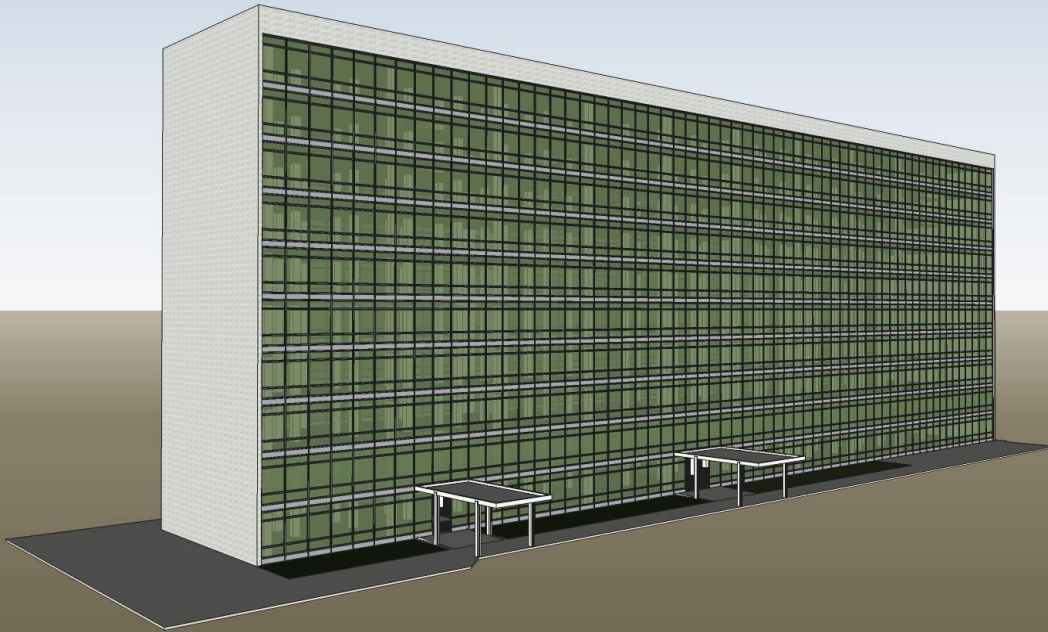


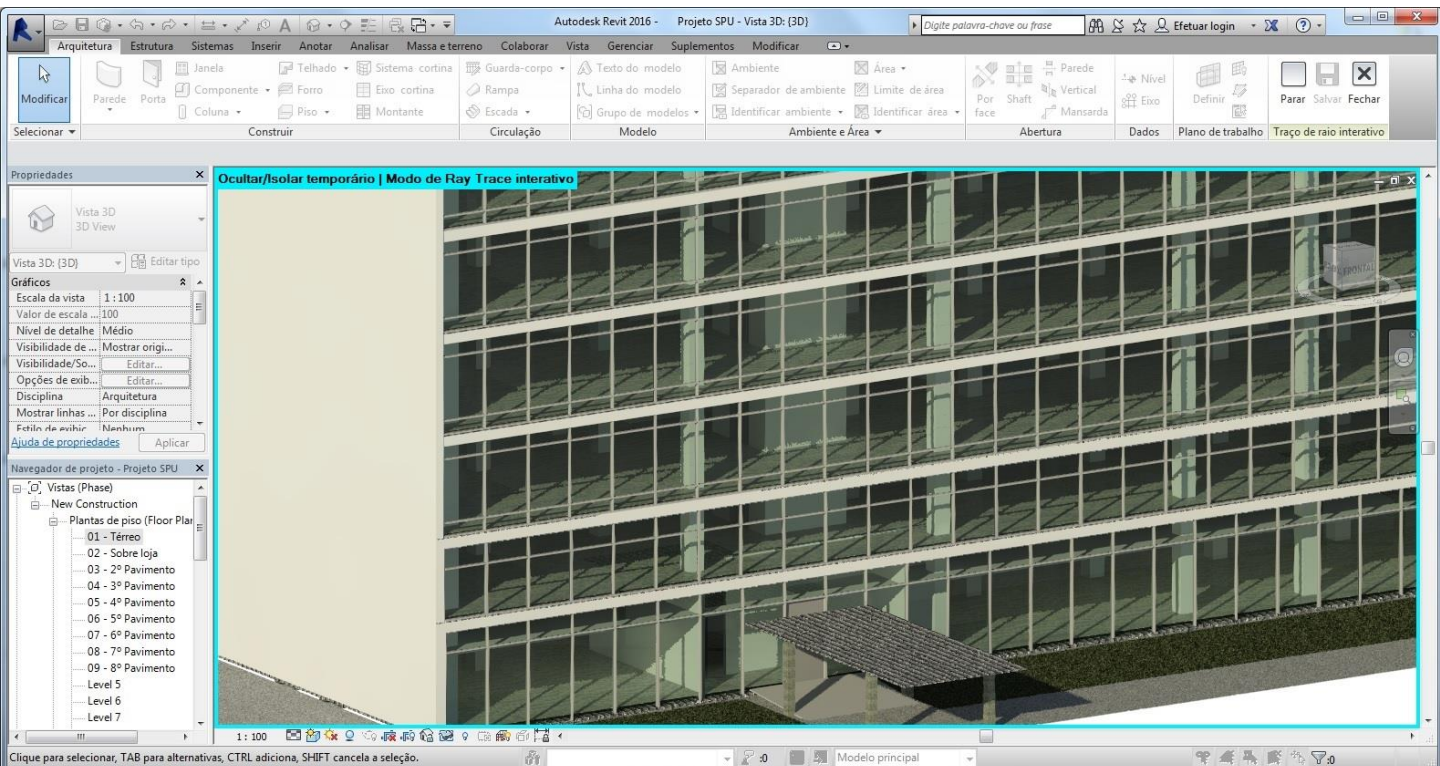
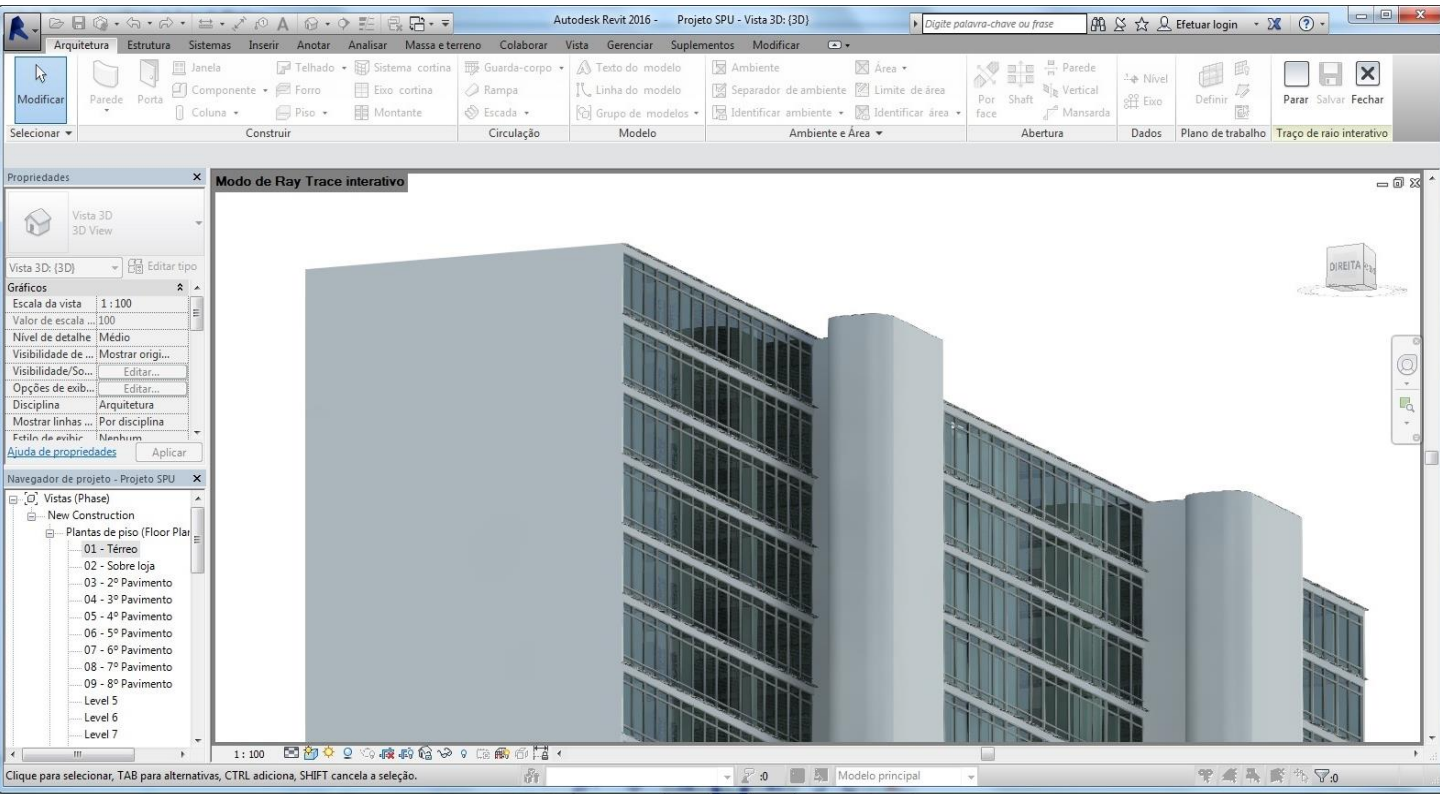
Modelagem 3D

&

Quantitativos de Materiais

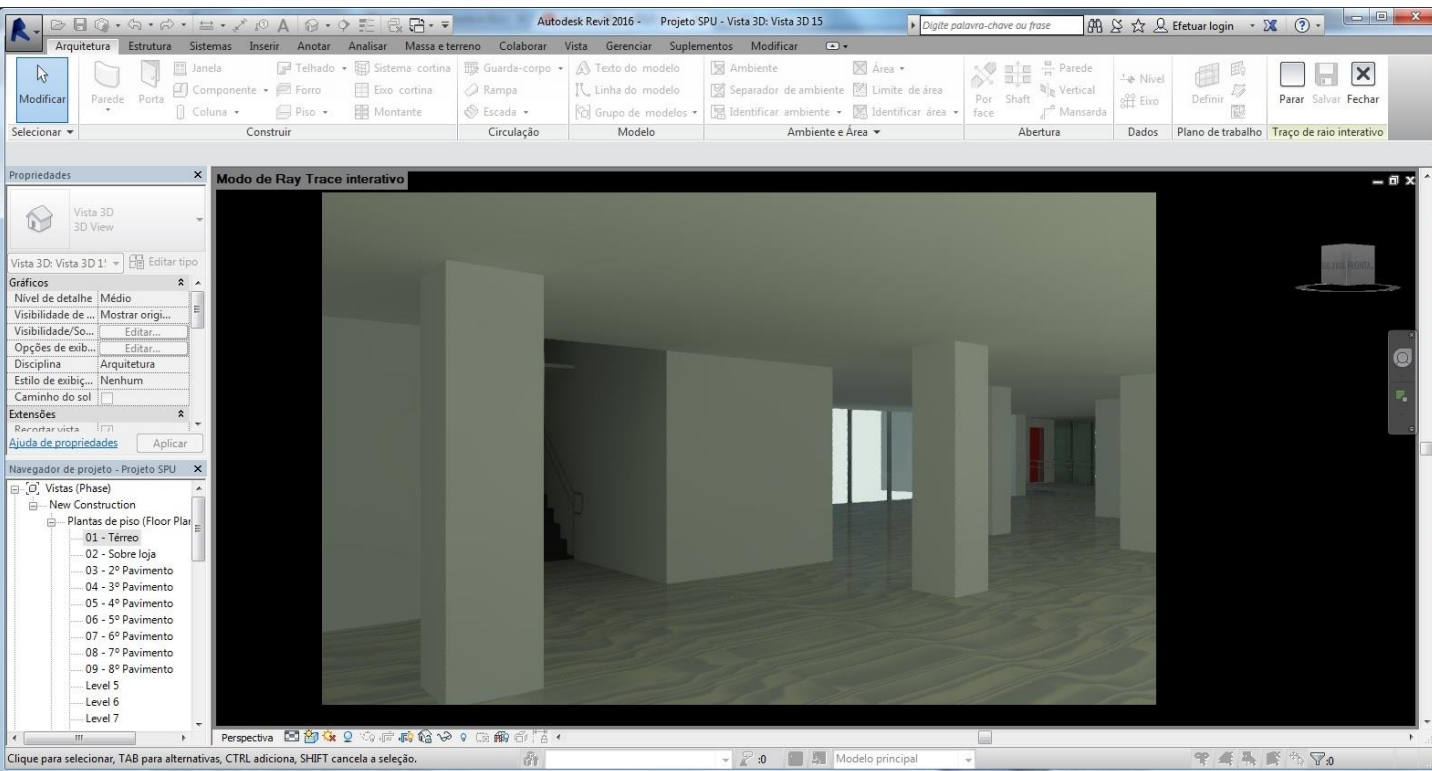
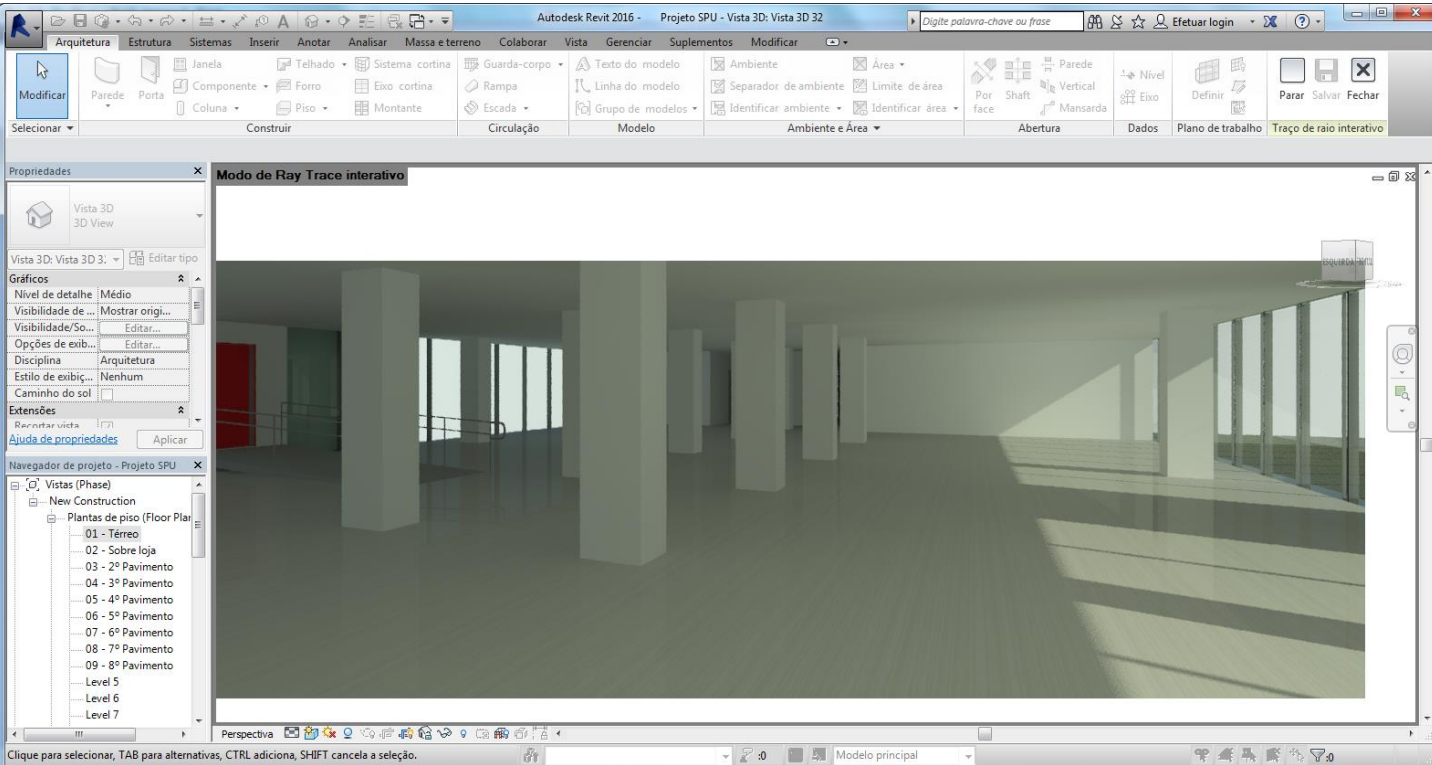


Modelagem 3D | Externo | Revit



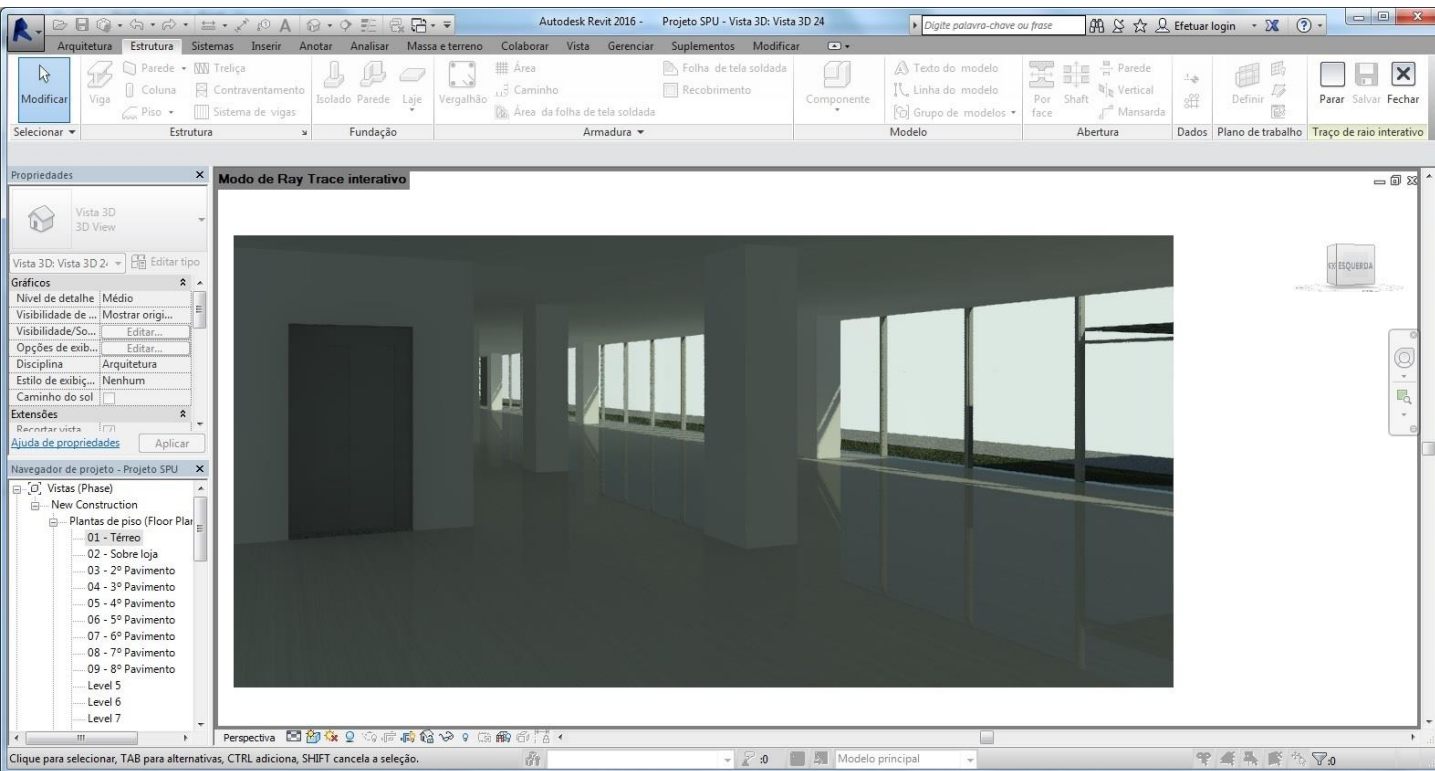
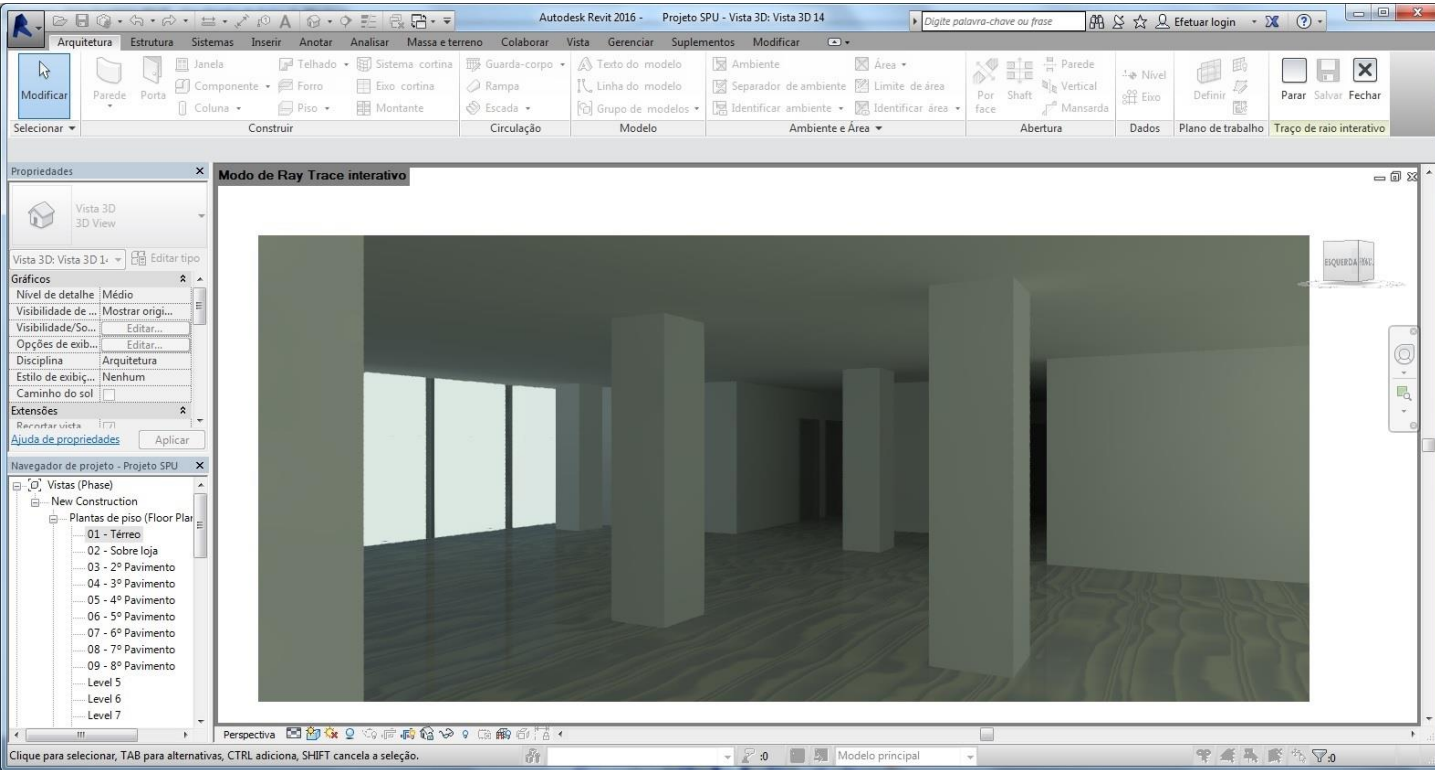
RETROFIT BLOCO O | Escritório de Projetos | DECIP | SPU

Modelagem 3D | Interno | Revit



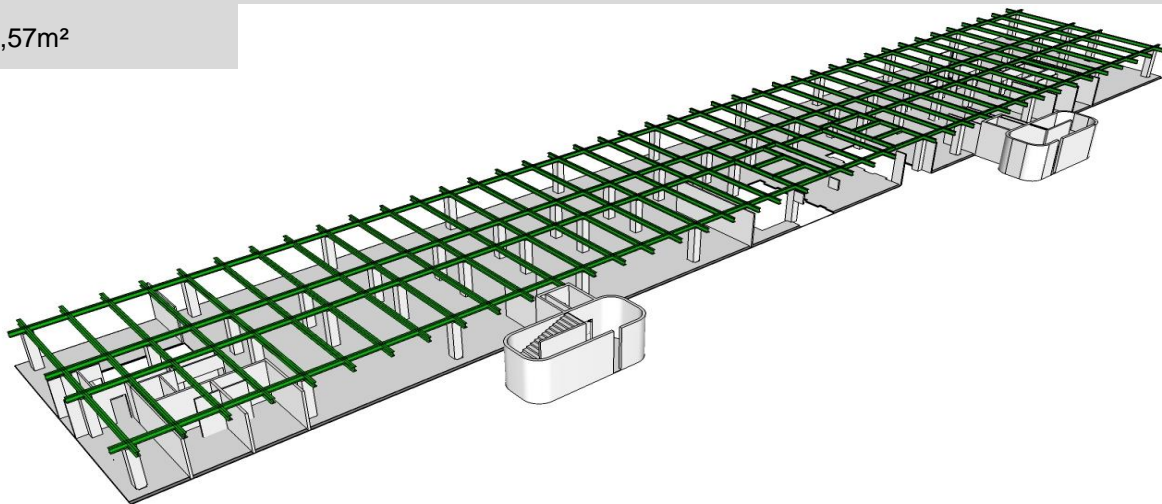
RETROFIT BLOCO O | Escritório de Projetos | DECIP | SPU

Modelagem 3D | Interno | Revit



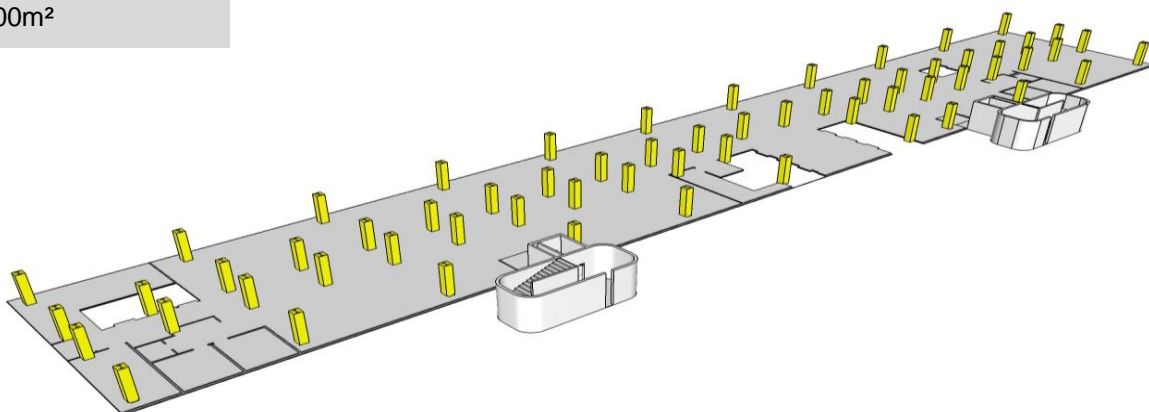
Vigas metálicas | Existentes

Área Total: 14852,57m²



Pilares Existentes

Área Total: 3.921,00m²



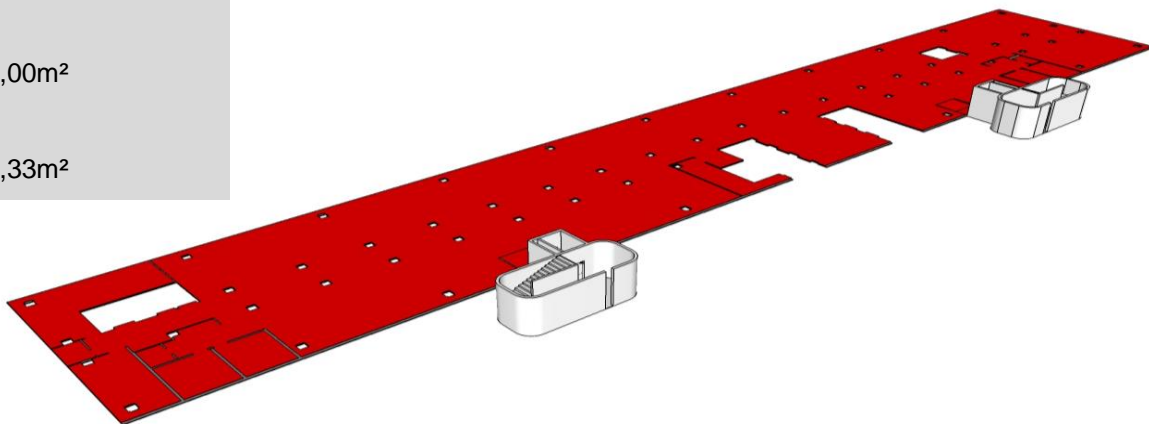
Pisos | Elevado e Vinílico

Piso Elevado

Área Total: 17.094,00m²

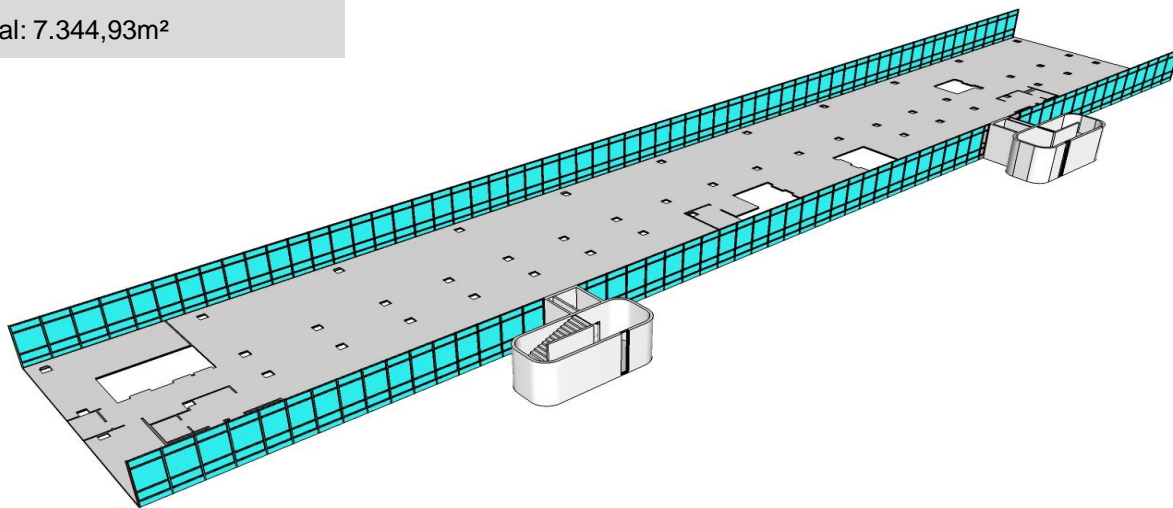
Piso Vinílico

Área Total: 17.378,33m²



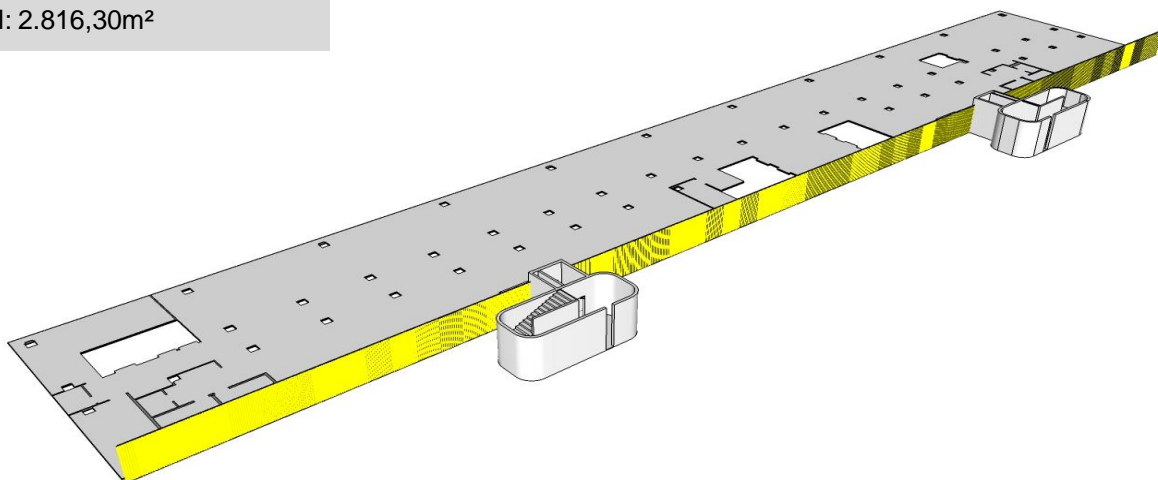
Esquadrias de Alumínio

Área Total: 7.344,93m²

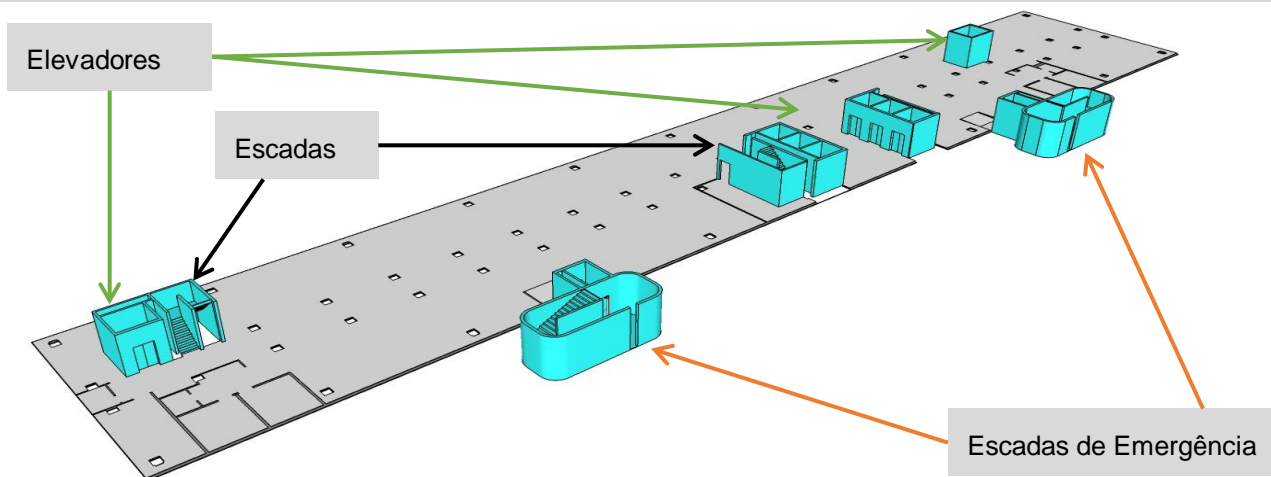


Brise Soleil

Área Total: 2.816,30m²



Circulação Vertical



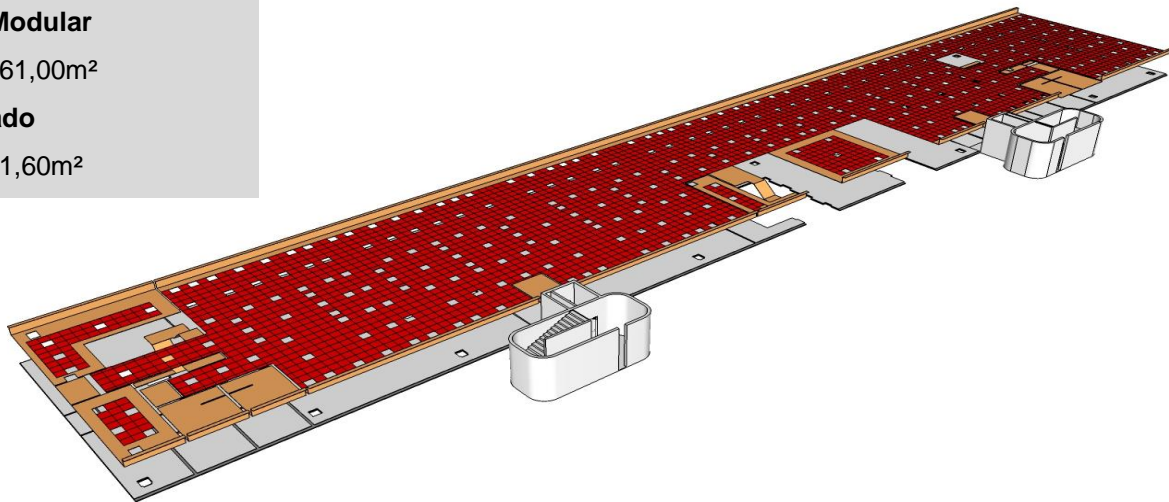
Forros de Gesso | Mineral Modular e Acartonado

Forro Mineral Modular

Área Total: 14.061,00m²

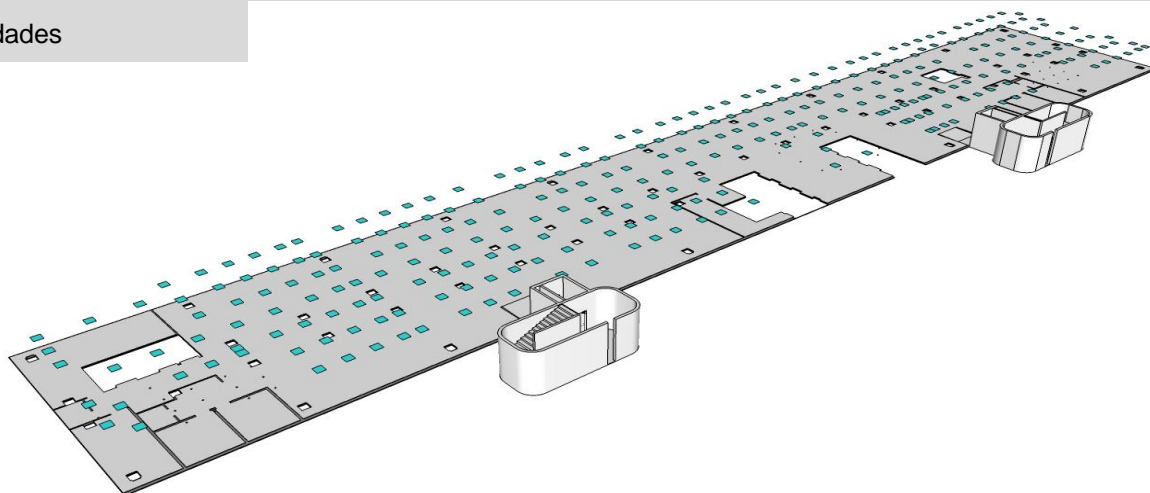
Forro Acartonado

Área Total: 1.351,60m²



Iluminação | Painéis LED

Total: 3.294 unidades



Paredes de Gesso | Drywall

Área Total: 9.250,00m²

